



## 4-slot Managed Modular Switch

MGSW-004

### User's Manual



## Trademarks

Copyright © PLANET Technology Corp. 2003.

Contents subject to revision without prior notice.

PLANET is a registered trademark of PLANET Technology Corp. All other trademarks belong to their respective owners.

## Disclaimer

PLANET Technology does not warrant that the hardware will work properly in all environments and applications, and makes no warranty and representation, either implied or expressed, with respect to the quality, performance, merchantability, or fitness for a particular purpose.

PLANET has made every effort to ensure that this User's Manual is accurate; PLANET disclaims liability for any inaccuracies or omissions that may have occurred.

Information in this User's Manual is subject to change without notice and does not represent a commitment on the part of PLANET. PLANET assumes no responsibility for any inaccuracies that may be contained in this User's Manual. PLANET makes no commitment to update or keep current the information in this User's Manual, and reserves the right to make improvements to this User's Manual and/or to the products described in this User's Manual, at any time without notice.

If you find information in this manual that is incorrect, misleading, or incomplete, we would appreciate your comments and suggestions.

## FCC Warning

his equipment has been tested and found to comply with the limits for a Class A digital device, pursuant to Part 15 of the FCC Rules. These limits are designed to provide reasonable protection against harmful interference when the equipment is operated in a commercial environment. This equipment generates, uses, and can radiate radio frequency energy and, if not installed and used in accordance with the Instruction manual, may cause harmful interference to radio communications. Operation of this equipment in a residential area is likely to cause harmful interference in which case the user will be required to correct the interference at his own expense.

## CE Mark Warning

This is a Class A product. In a domestic environment, this product may cause radio interference, in which case the user may be required to take adequate measures.

## Revision

**PLANET 4-slot Managed Modular Switch User's Manual  
FOR MODEL: MGSW-004**

**Part No.: EM-MGSW004**

## TABLE OF CONTENTS

<b>CHAPTER 1 INTRODUCTION.....</b>	<b>1</b>
1.1 CHECKLIST.....	1
1.2 ABOUT THE SWITCH.....	1
1.3 PRODUCT FEATURE.....	2
MANAGEMENT FEATURE.....	2
<b>CHAPTER 2 HARDWARE INSTALLATION .....</b>	<b>3</b>
2.1 FRONT PANEL.....	3
2.2 REAR PANEL.....	4
2.3 HARDWARE INSTALLATION .....	4
<b>CHAPTER 3 CONSOLE AND TELNET MANAGEMENT.....</b>	<b>6</b>
3.1 CONNECT TO PC BY RS-232 CABLE.....	6
3.2 TELNET .....	6
3.3 MAIN MENU.....	7
3.3.1 Device Settings .....	7
3.3.2 Ports Settings.....	8
3.3.3 Address Table.....	9
3.3.4 Spanning Tree Protocol.....	9
3.3.5 Broadcast Storm Filter.....	10
3.3.6 IGMP.....	10
3.3.7 VLAN Mode (2 modes).....	10
3.3.8 VLAN for CPU (2 VLANs) .....	11
3.3.9 Secure IP for Telnet and HTTP .....	11
3.3.10 Save Current Settings.....	12
3.3.11 Factory Default Settings & Reboot System.....	12
3.3.12 Reboot System.....	12
3.3.13 Quit.....	13
<b>CHAPTER 4 WEB MANAGEMENT .....</b>	<b>14</b>
4.1 LOGIN INTO SWITCH.....	14
4.2 HOME.....	15
4.3 MODULES.....	15
4.4 PORTS .....	15
4.5 STATISTICS (PORT COUNTERS) AND STATISTICS 2 (RMON STATISTICS) .....	16
4.6 VLAN .....	17
4.7 TRUNK.....	17
4.8 STP .....	18

4.9 PORT SECURITY .....	19
4.10 PRIORITY – 802.1P .....	20
4.11 PRIORITY 2 – TOS (TYPE OF SERVICE).....	20
4.12 IGMP.....	21
4.13 STATIC ADDRESS .....	22
4.14 STORM FILTER .....	22
4.15 PORT MIRROR .....	23
4.16 IP CONFIG.....	24
4.17 SNMP .....	25
4.18 SAVE & REBOOT.....	25
4.19 UPGRADE.....	26
<b>APPENDIX A TECHNICAL SPECIFICATIONS .....</b>	<b>27</b>
<b>APPENDIX B .....</b>	<b>28</b>

# Chapter 1 Introduction

## 1.1 Checklist

Thank you for purchasing Planet's MGSW-004 Managed Modular Switches. Before continuing, please check the contents of your package for following parts:

- Ø MGSW-004 Managed Modular Switches
- Ø Power Cord
- Ø RS-232 cable
- Ø CD-ROM
- Ø Rock mounting brackets
- Ø Four Robber foot
- Ø Quick installation Guide
- Ø Rock-mounting bracket

**Note:** if any of these pieces are missing or damage please contact your dialer immediately.

## 1.2 About the Switch

Planet's MGSW-004 is a 4-slot managed modular switch, This switch is designed to provide your network with Ethernet, Fast Ethernet, Gigabit Ethernet connectivity over twisted pair and Fiber optic cable. MGSW-004 is a high performance switch that provides different optional modules. The optional modules can be 8-port 10/100Base N-Way Switch Module, 100Base-FX Fiber Module (ST/SC), 1000Base-LX Gigabit Module, 1000Base-SX Gigabit Module and 1 x 1000Base-T(Gigabit)

In this modular switch, each module has its own entry MAC address table to store source address, which is 4K for 8-port 10/100 TX and Gigabit module, 12K for 4-port fiber. MGSW-004 supports up to 9.6Gbp back plane for packet transmission

This modular switch is able to managed through web, telnet and console and SNMP MIBII is also supported for maximum management functionality. MGSW-004 provides user with high-speed network connections with a store-and-forward architecture for abnormal packet filtering. This switch also supports IEEE802.1D Spanning Tree Protocol to maintain a loop-free network and IGMP to limit the flow of IP multicast traffic. MGSW-004 supports IEEE802.1Q VLAN up to 4095 groups. This switch also provides port security for improved network security.

### **1.3 Product Feature**

- Ø Conforms to IEEE 802.3, 802.3u, 802.3z, 802.3ab and 802.3x standards
- Ø 4 expansion slots to configure flexible network
- Ø One built-in intelligent module with RS-232 console port ( front side )
- Ø Supports Half-duplex mode for backpressure, and full-duplex for flow-control
- Ø Store-and-Forward switching architecture for abnormal packet filtering
- Ø Up to 9.6Gbps Back-plane forwarding rate
- Ø Mac address: 4K for 8 port 10/100 TX and Gigabit module, 12K for 2/4/8 port fiber module.
- Ø Packet Buffer: 256Kbytes for 8 ports 10/100TX module, 4 Mbytes for 100FX Fiber module, 128KBytes for Gigabit module

### **Management Feature**

- Ø IEEE 802.1Q Tagging VLAN ( Up to 4095 VLANs )
- Ø Telnet, console and web manageable
- Ø IEEE 802.1d Spanning Tree Protocol ( STP )
- Ø Statistic Address Table for manual address-addition
- Ø Port Trunking supported
- Ø IGMP and Port Mirroring supported
- Ø Broadcast Storm Filter function supported
- Ø Firmware upgradeable trough TFTP
- Ø MIB II and Private MIB supported
- Ø Port Priority - 802.1p & ToS support
- Ø Port Security function supported

# Chapter 2 HARDWARE INSTALLATION

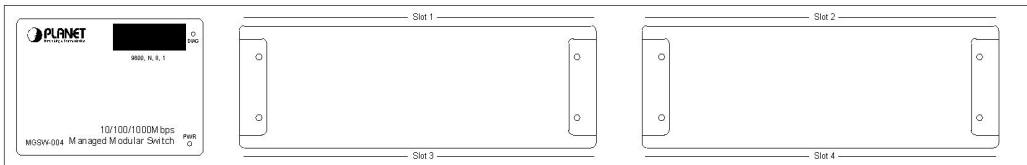
This section describes the hardware features and installation of 4-slot Managed Modular Switch. Before using MGSW-004, read the user's manual carefully.

MGSW-004 has provide different modules

- Ø 8-Port 10/100 auto-sensing Intelligent Switch Module
- Ø 4-Port 100 Base-FX Intelligent Fiber Module
- Ø Gigabit 1000Base-T Intelligent Switch Module
- Ø Gigabit 1000Base-SX/LX Intelligent Fiber Module

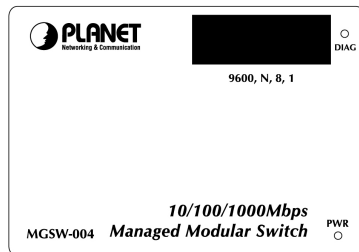
## 2.1 Front Panel

The front panel of the 4-slot Managed Modular Switch consist LED indicators, console port, and 4-slot modules.



The Front Panel of MGSW-004

### LED Indicators



LED Indicators

LED	Status	Description
Power	Green	Power On
	Off	Power is not connected
Diag.	Red	Lit on: Alert and problem notice

### **Console ports**

The RS-232 console port is an interface that directly connects to the PC. When the connection between the PC and switch is ready, run the **Hyper Terminal** and configure its **communication parameters**. The operating mode of the console port is:

- Ø Baud rate: 9600
- Ø Data bits: 8
- Ø Parity: none
- Ø Stop bits: 1
- Ø Flow control: none

After finished the setting, click **OK**.

### **2.2 Rear Panel**

The Rear Panel of the switch indicates an AC inlet power socket and on and off switch, which accepts input power from 100-240V AC, 50-60Hz.



Rear Panel of MGSW-004

### **Power Receptacle**

For the compatibility with electric service in most of areas, MGSW-004's power supply can automatically adjust line power in the range 100-240V AC, 50-60Hz.

### **Power On**

Connect the power cord to the power socket on the Rear Panel of the Switch. The other side of power cord connects to the power outlet.

#### **Power Notice:**

1. The device is a power-required device, it means, it will not work till it is powered. If your networks should active all the time, please consider using UPS (Uninterrupted Power Supply) for your device. It will prevent you from network data loss or network downtime.
2. In some area, installing a surge suppression device may also help to protect your switch from being damaged by unregulated surge or current to the Switch or the power adapter.

### **2.3 Hardware installation**

MGSW-004 can be placed on desktop or mounted on rock. If this switch is used as standalone standard, the user can immediately use most of the features simply by attaching the cables and turning the power on.



## **Desktop installation**

For desktop installation, make sure the desk is flat and clean. Plug all the network cables and the power cord then the system is ready.

**Note:** Do not obstruct any vents at the sides of the case and keep water off.

## ***Rock-mount installation***

MGSW-004 can be mounted in a standard 19-inch rack. The following steps is teaching user how to Rack Mounting the Switch in the 19-inch rack:

1. Disconnect all cables from the switch.
2. Place the unit the right way up on a hard, flat surface with the front facing toward you.
3. Locate a mounting bracket over the mounting holes on one side of the unit.
4. Insert the screws and fully tighten with a suitable screwdriver.
5. Repeat the two previous steps for the other side of the unit.
6. Insert the unit into the 19" rack and secure with suitable screws (not provided).
7. Reconnect all cables.

## ***Module installation***

The slot on the front panel is purposed for installing optional modules. Following steps is described how to install a module.

1. Power off the switch.
2. Removing the two screws on the faceplate of slot with a flat-head screwdriver.
3. Push the module gently into the slot along the slide tracks.
4. Ensuring that it firmly engages with the connector then tighten the screws to secure the module.

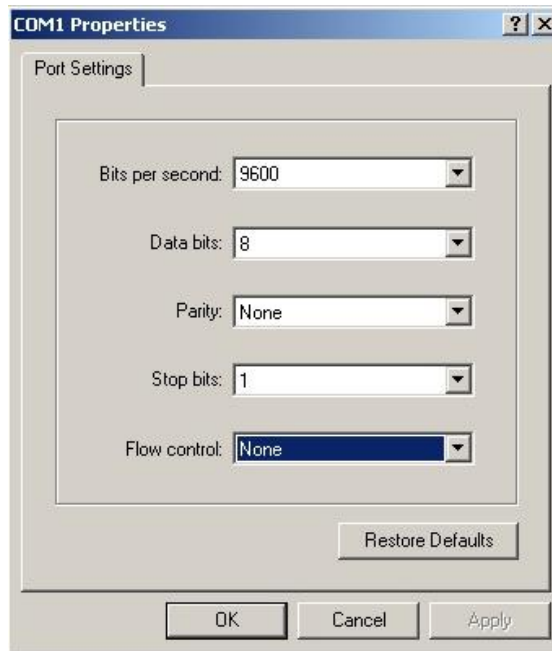
# Chapter 3 Console and Telnet Management

## 3.1 connect To PC by RS-232 cable

The RS-232 console port is an interface that directly connects to the PC. When the connection between the PC and switch is ready, run the **Hyper Terminal** and configure its **communication parameters**. The operating mode of the console port is:

- Ø Baud rate: 9600
- Ø Data bits: 8
- Ø Parity: none
- Ø Stop bits: 1
- Ø Flow control: none

After finished the setting, click **OK**.



## 3.2 Telnet

To access the switch through Telnet

1. Make sure switch is configure with an IP address and switch is reachable from PC.
2. Start telnet program from PC and connect to the switch. The management interface is exactly same with RS-232 console.

### 3.3 Main Menu

The main menu displays all the sub-menus that are available. Striking Enter, at a highlighted option, will confirm the choice of the specified sub-menu. There are thirteen menu items to choose from:

- Ø Device Settings
- Ø Port settings
- Ø Address Table
- Ø Spanning Tree Protocol
- Ø Broadcast Storm Filter
- Ø IGMP
- Ø VLAN Mode (2 modes)
- Ø VLAN for CPU (2 VLANs)
- Ø Secure IP for Telnet and HTTP
- Ø Save Current Settings
- Ø Factory Default Settings & Reboot System
- Ø Reboot System
- Ø Quit

```
Module 4: 1-port 1000Base-SX/LX Gigabit Fiber Module (48360)

Type 'go' to enter main menu: go

=====

[Main]
1. Device Settings
2. Ports Settings
3. Address Table
4. Spanning Tree Protocol
5. Broadcast Storm Filter
6. IGMP
V. VLAN Mode (2 modes)
C. VLAN for CPU (2 VLANs)
I. Secure IP for Telnet and HTTP
S. Save Current Settings
D. Factory Default Settings & Reboot System
R. Reboot System
Q. Quit

Select one function (1-6, V, C, I, S, D, R, Q): 1_
```

#### 3.3.1 Device Settings

This menu contains system parameters to display and configure the switch to your network.

Menu items are:

- Ø Version (RO): display the firmware version of MGSW-004
- Ø MAC Address (RO): display the MAC Address of MGSW-004
- Ø System Up Time (RO): display the work time of MGSW-004

- Ø System Name: display and change the system name of this Switch
- Ø System Location: display and set the location of this Switch
- Ø System Contact: display and set the administrator of this Switch
- Ø IP Address: display and set the IP address of MGSW-004
- Ø Subnet Mask: display and set the Subnet Mask of MGSW-004
- Ø Default Gateway: display and set the gateway of MGSW-004
- Ø Change User/Password: allow to set the User name and password
- Ø Console Login Enabled: provide enable or disable Console login MGSW-004,
- Ø Quit: logout on MGSW-004

```

0. Quit
Select one function (1-6, V, C, I, S, D, R, Q): 1
=====
[Main] [Device Settings]
0.1 Version (RO):      2.02.7, Jan. 14, 2002
0.2 MAC Address (RO): 00-00-1c-f3-0e-a2
0.3 System Up Time (RO): 0 days 6 hours 55 minutes 43 seconds
1. System Name:      MaxSwitch II M
2. System Location:  Somewhere
3. System Contact:   Someone
4. IP Address:       192.168.99.62
5. Subnet Mask:      255.255.255.0
6. Default Gateway:  192.168.99.254
7. Change User/Password: root/root
8. Console Login Enabled: No
0. Quit

Note: Please save settings and reboot system
so that your device settings will take effect

Select one function (1-8, Q):

```

### 3.3.2 Ports Settings

- Ø Select any one port, the menu contains ten items for port management will shown up as below:
- Ø Link (RO): display the link state (UP/DOWN) of per port on MGSW-004
- Ø Speed/Duplex (RO): display the Speed/Duplex of the device connect to the port
- Ø Port Enabled: allow enable or disable the port of MGSW-004
- Ø Speed/Duplex: allow set Auto- negotiation, 100Mbps-full/half duplex, 10Mbps-full/half duplex
- Ø Flow Control: allow enable or disable flow control on each port
- Ø Back Pressure: allow enable or disable Back Pressure on each port
- Ø VLAN Tagged: allow enable or disable VLAN Tagged on each port
- Ø Default VLAN ID: allow set VLAN ID 1~4095 on each port
- Ø Note: set and display the information of each port
- Ø Quit: back to previous menu

```

=====
[Main] [Ports Settings] [Default VLAN ID]
module: 1, port: 1

Input Default VLAN ID (1..4095) or Q(uit): q
=====

[Main] [Ports Settings]
module: 1, port: 1

0.1 Link (RO):      Up
0.2 Speed/Duplex (RO): 100/Full
1. Port Enabled:    Enabled
2. Speed/Duplex:    Auto
3. Flow Control:    Enabled
4. Back Pressure:   Enabled
5. VLAN Tagged:     No
6. Default VLAN ID: 1
7. Note:
0. Quit

Select one function (1-7, Q): _

```

### 3.3.3 Address Table

This menu contains four items for MAC address record on each working port

- Ø All
- Ø Module
- Ø Module Port
- Ø Quit

```

1      1      00-03-79-01-0c-ff  1
=====
[Main] [Address Table] [Module]

Select one module (1-4) or Q(uit):
=====

[Main] [Address Table] [Module]

Select one module (1-4) or Q(uit): q
=====

[Main] [Address Table]

1. All
2. Module
3. Module Port
0. Quit

Select one function (1-3, Q): _

```

### 3.3.4 Spanning Tree Protocol

This menu contains three items to enable or disable STP:

- Ø Enable
- Ø Disable
- Ø Quit

```

2. Ports Settings
3. Address Table
4. Spanning Tree Protocol
5. Broadcast Storm Filter
6. IGMP
V. VLAN Mode (2 modes)
C. VLAN for CPU (2 VLANs)
I. Secure IP for Telnet and HTTP
S. Save Current Settings
D. Factory Default Settings & Reboot System
R. Reboot System
Q. Quit

Select one function (1-6, V, C, I, S, D, R, Q): 4
=====

[Main] [Spanning Tree Protocol]
Current state: Disabled

1. Enable
2. Disable
0. Quit

Select one function (1-2, Q):

```

### 3.3.5 Broadcast Storm Filter

This menu contains three items to enable or disable Broadcast Storm Filter:

- Ø Enable
- Ø Disable
- Ø Quit

```
2. Ports Settings
3. Address Table
4. Spanning Tree Protocol
5. Broadcast Storm Filter
6. IGMP
V. VLAN Mode (2 modes)
C. VLAN for CPU (2 VLANs)
I. Secure IP for Telnet and HTTP
S. Save Current Settings
D. Factory Default Settings & Reboot System
R. Reboot System
Q. Quit

Select one function (1-6, V, C, I, S, D, R, Q): 5
=====

[Main] [Broadcast Storm Filter]
Current state: Disabled

1. Enable
2. Disable
Q. Quit

Select one function (1-2, Q): _
```

### 3.3.6 IGMP

This menu contains three items to enable or disable IGMP:

- Ø Enable
- Ø Disable
- Ø Quit

```
2. Ports Settings
3. Address Table
4. Spanning Tree Protocol
5. Broadcast Storm Filter
6. IGMP
V. VLAN Mode (2 modes)
C. VLAN for CPU (2 VLANs)
I. Secure IP for Telnet and HTTP
S. Save Current Settings
D. Factory Default Settings & Reboot System
R. Reboot System
Q. Quit

Select one function (1-6, V, C, I, S, D, R, Q): 6
=====

[Main] [IGMP]
Current state: Disabled

1. Enable
2. Disable
Q. Quit

Select one function (1-2, Q): _
```

### 3.3.7 VLAN Mode (2 modes)

This menu contains two items for 2 VLAN mode selections:

- Ø VLAN is valid for all packets Disable
- Ø VLAN is valid for broadcast and multicast packets, not for unicast packets.
- Ø Quit

```

3. Address Table
4. Spanning Tree Protocol
5. Broadcast Storm Filter
6. IGMP
V. VLAN Mode (2 modes)
C. VLAN for CPU (2 VLANs)
I. Secure IP for Telnet and HTTP
S. Save Current Settings
D. Factory Default Settings & Reboot System
R. Reboot System
Q. Quit

Select one function (1-6, V, C, I, S, D, R, Q): v
=====

[Main] [VLAN Mode]
Current mode: 1

1. VLAN is valid for all packets
2. VLAN is valid for broadcast and multicast packets, not for unicast packets.
   For SmartBits test, this mode will get better throughput.
Q. Quit

Select one function (1-2, Q):

```

### 3.3.8 VLAN for CPU (2 VLANs)

This menu contains two items for 2 VLANs for CPU:

- Ø Current first VLAN for CPU: VLAN ID 1 Current second
- Ø VLAN for CPU: None
- Ø Quit

```

1. Device Settings
2. Ports Settings
3. Address Table
4. Spanning Tree Protocol
5. Broadcast Storm Filter
6. IGMP
V. VLAN Mode (2 modes)
C. VLAN for CPU (2 VLANs)
I. Secure IP for Telnet and HTTP
S. Save Current Settings
D. Factory Default Settings & Reboot System
R. Reboot System
Q. Quit

Select one function (1-6, V, C, I, S, D, R, Q): c
=====

[Main] [VLAN for CPU]

1. Current first VLAN for CPU: VLAN ID 1
2. Current second VLAN for CPU: None
Q. Quit

Select one function (1-2, Q):

```

### 3.3.9 Secure IP for Telnet and HTTP

This menu contains seven items for Secure IP setting:

- Ø Secure IP for Telnet: Disabled (default value)
- Ø Secure IP for HTTP: Disabled (default value)
- Ø Secure IP 1:
- Ø Secure IP 2:
- Ø Secure IP 3:
- Ø Secure IP 4:
- Ø Quit

#### 3.3.9.1 Secure IP for Telnet

Disable allow any PC login in MGSW-004 by Telnet, enable allow the PC of secure IP login in MGSW-004

#### 3.3.9.2 Secure IP for HTTP

Disable allow any PC login in MGSW-004 by HTTP, enable allow PC of secure IP login in

MGSW-004

### 3.3.9.3 Secure IP 1,2,3,4

Allow setting 4 Secure IP addresses of 4 PCs

```
=====
C. VLAN for CPU (2 VLANs)
I. Secure IP for Telnet and HTTP
S. Save Current Settings
D. Factory Default Settings & Reboot System
R. Reboot System
Q. Quit

Select one function (1-6, V, C, I, S, D, R, Q): i
=====

[Main] [Secure IP]

1. Secure IP for Telnet: Disabled
2. Secure IP for HTTP: Disabled
3. Secure IP 1:
4. Secure IP 2:
5. Secure IP 3:
6. Secure IP 4:
Q. Quit

Note: We suggest that you enable the HTTP option if the management CPU
uses an Internet real IP

Select one function (1-6, Q):
```

### 3.3.10 Save Current Settings

This menu provide save current settings of this Switch.

```
=====

[Main]

1. Device Settings
2. Ports Settings
3. Address Table
4. Spanning Tree Protocol
5. Broadcast Storm Filter
6. IGMP
V. VLAN Mode (2 modes)
C. VLAN for CPU (2 VLANs)
I. Secure IP for Telnet and HTTP
S. Save Current Settings
D. Factory Default Settings & Reboot System
R. Reboot System
Q. Quit

Select one function (1-6, V, C, I, S, D, R, Q): s
=====

[Main] [Save Current Settings]

Are you sure? (Y, N):
```

### 3.3.11 Factory Default Settings & Reboot System

This menu provide restore to the default settings of this Switch

```
=====

[Main]

1. Device Settings
2. Ports Settings
3. Address Table
4. Spanning Tree Protocol
5. Broadcast Storm Filter
6. IGMP
V. VLAN Mode (2 modes)
C. VLAN for CPU (2 VLANs)
I. Secure IP for Telnet and HTTP
S. Save Current Settings
D. Factory Default Settings & Reboot System
R. Reboot System
Q. Quit

Select one function (1-6, V, C, I, S, D, R, Q): d
=====

[Main] [Factory Default Settings]

Are you sure? (Y, N): _
```

### 3.3.12 Reboot System

This menu provides reboot the Switch



```
=====
[Main]
1. Device Settings
2. Ports Settings
3. Address Table
4. Spanning Tree Protocol
5. Broadcast Storm Filter
6. IGMP
V. VLAN Mode (2 modes)
C. VLAN for CPU (2 VLANs)
I. Secure IP for Telnet and HTTP
S. Save Current Settings
D. Factory Default Settings & Reboot System
R. Reboot System
Q. Quit

Select one function (1-6, V, C, I, S, D, R, Q): r
=====

[Main] [Reboot System]
Are you sure? (Y, N): _
```

### 3.3.13 Quit

This menu provide logout the switch

```
5. Broadcast Storm Filter
6. IGMP
V. VLAN Mode (2 modes)
C. VLAN for CPU (2 VLANs)
I. Secure IP for Telnet and HTTP
S. Save Current Settings
D. Factory Default Settings & Reboot System
R. Reboot System
Q. Quit

Select one function (1-6, V, C, I, S, D, R, Q): q
=====

MAC Address:      00-00-1c-f3-0e-a2
Console Baud Rate: 9600, N, 8, 1
IP Address:       192.168.99.62
Subnet Mask:      255.255.255.0
Default Gateway:  192.168.99.254

Note 1: the management CPU module is available in VLAN 1 (changeable)
Note 2: the default User/Password is root/root

Type 'go' to enter main menu:
```

# Chapter 4 WEB MANAGEMENT

MGSW-004 support web management therefore in this section will introduce the configuration and functions of the web-based management.

Before to use web management, please setup the IP Address with the console port (RS-232) and use this IP address to configure MGSW-004 through the web interface or modify your PC's IP domain to the same with MGSW-004 then use the default IP address to remote configure MGSW-004 through the Web interface.

## 4.1 login into switch

- Ø Use Internet Explorer
- Ø Type in IP Address of the MGSW-004 switch then press enter
- Ø Key in user name and password. The default user name is admin without password
- Ø The click ok



## 4.2 Home

The homepage is display the configuration of the MGSW-004

System Name	An administratively-assigned name of the managed unit
System Location	The physical location of this managed unit
System Contact	The contact person for this managed unit.
System Up Time	The time last since the managed unit
IP Address	The IP address of the managed unit
Subnet Mask	The subnet mask of the managed unit
Default Gateway	The default Gateway of the managed unit
MAC Address	The MAC address of the managed unit
Console	The RS232 Console setting of the managed unit
Firmware Version	The firmware version of the managed unit

## 4.3 Modules

This page shows the modules that have installed into the MGSW-004. The optional modules can be 8-port 10/100Base N-Way Switch Module, 100Base-FX Fiber Module (ST/SC), 1000Base-LX Gigabit Module, 1000Base-SX Gigabit Module and 1 x 1000Base-T(Gigabit)

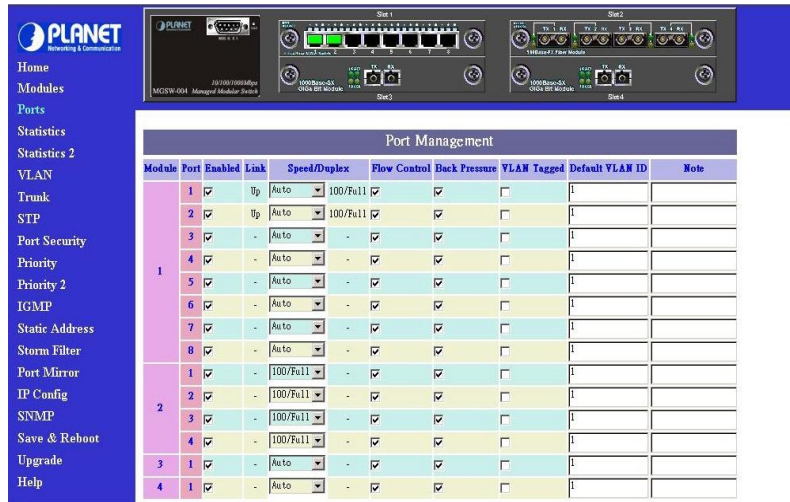
The screenshot shows the PLANET MGSW-004 web interface. The left sidebar contains a navigation menu with the following items: Home, Modules, Ports, Statistics, Statistics 2, VLAN, Trunk, STP, Port Security, Priority, Priority 2, IGMP, Static Address, Storm Filter, Port Mirror, IP Config, SNMP, Save & Reboot, Upgrade, and Help. The main content area displays the 'Modules' configuration page for MGSW-004. At the top, there is a visual representation of the switch hardware with four slots labeled Slot1, Slot2, Slot3, and Slot4. Below this, the 'Modules' section lists the installed modules:

- Module 1:** 8-port 10/100Base-TX Switch Module
- Module 2:** 4-port 100Base FX(SC/ST) Fiber Module
- Module 3:** 1-port 1000Base-SX/LX Gigabit Fiber Module
- Module 4:** 1-port 1000Base-SX/LX Gigabit Fiber Module

A note below the list states: 'Note: 8 different modules are available'.

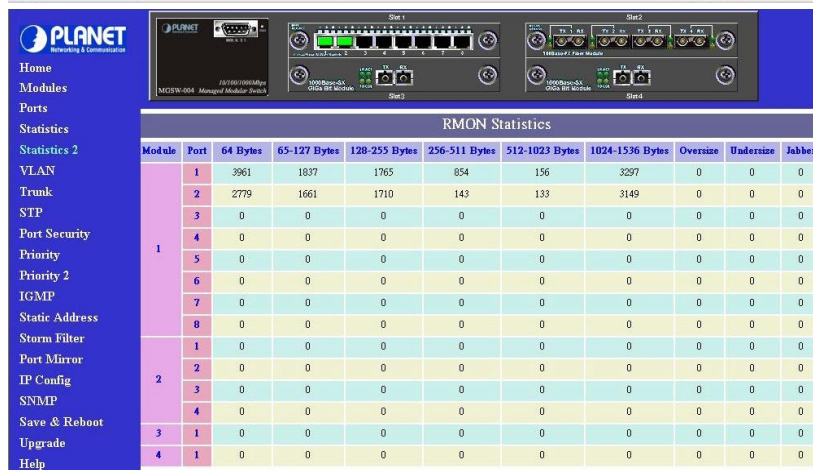
## 4.4 Ports

This page shows the port status of each port in each module, you can enable/disable each port, configure Speed/Duplex for each port, and assign VLAN ID



#### 4.5 Statistics (Port Counters) and Statistics 2 (RMON Statistics)

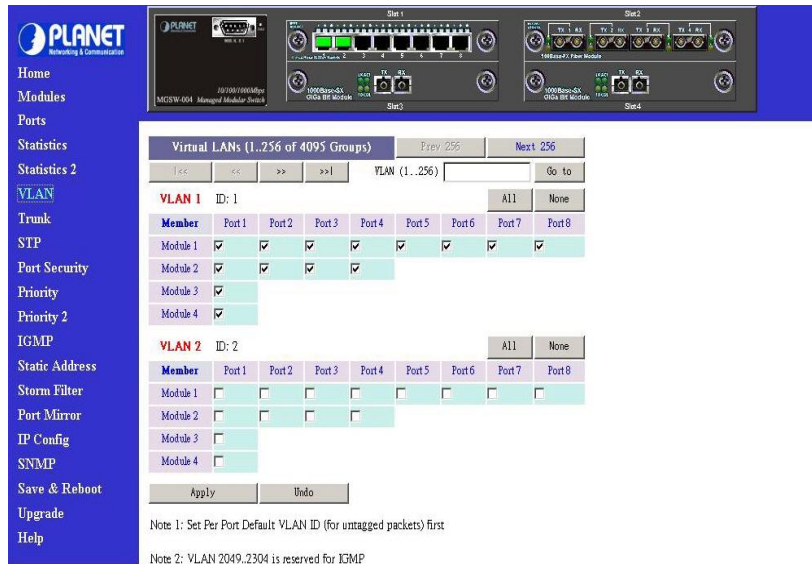
The Statistic page displays the detailed information about each port. You can compare and evaluate throughput or other port parameters. All screen data is updated automatically. You can clear 8 counters or packet size counters of some ports by select the corresponding "Clear" check boxes then press "Clear" button. To clear all counters of all ports, press the "Select All" button then "Clear" button.



## 4.6 VLAN

A VLAN (Virtual LAN) is a group of switch ports designated by the switch as belonging to the same broadcast domain. This feature allows workgroup to be defined on the basis of their logical location instead of their physical location, and does not require recalling

The default VLAN is that all ports belong to VLAN 1. This switch support up to 4095 port-based 802.1Q-compatible virtual LANs (VLANs).



In the VLAN management window, you will see 2 VLANs in the page. To select a certain VLAN, you can do the following:

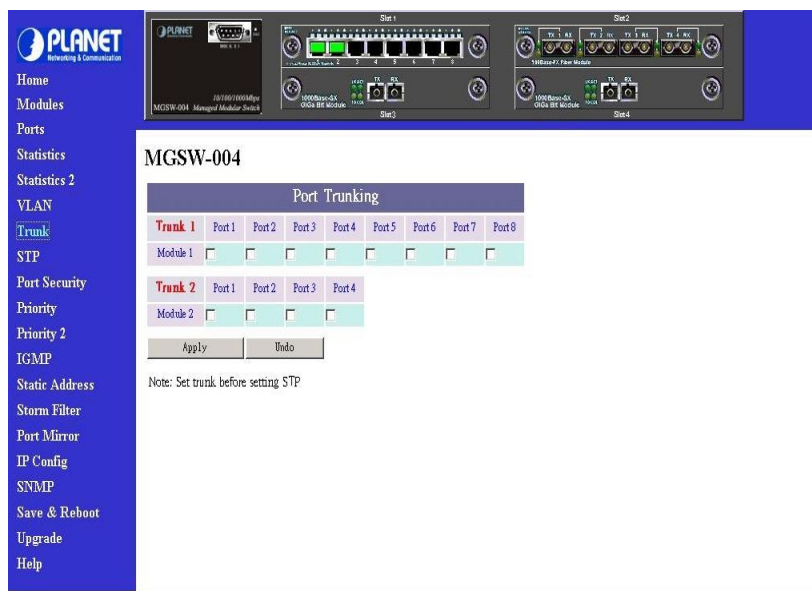
- Ø Press ">>" button to display the next two VLANs
- Ø Press "<<" button to display the previous two VLANs
- Ø Press ">>|" button to display the last two VLANs
- Ø Press "|<<<" button to display the first two VLANs
- Ø Enter the VLAN index in the "VLAN" edit box then press "Go to" button

You can add, edit and remove port members of each VLAN and then finally press "Apply" button only once to configure the desired VLANs you want.

*Note: if you want to set multiple VLANs, we suggest that you set Default VLAN ID for each port first in Ports page.*

## 4.7 Trunk

Port trunking is the ability to group several 10/100Base-TX or 100Base-FX ports to increase the bandwidth between this switch and another compatible switch. This is an inexpensive way to increase bandwidth. We define port trunking as the ability to group set of ports (up to 8 ) within the same module into a single logical link. The port trunk acts as a single link between switches. Multiple trunks may be implemented in this switch, but only one trunk can be created within a module.



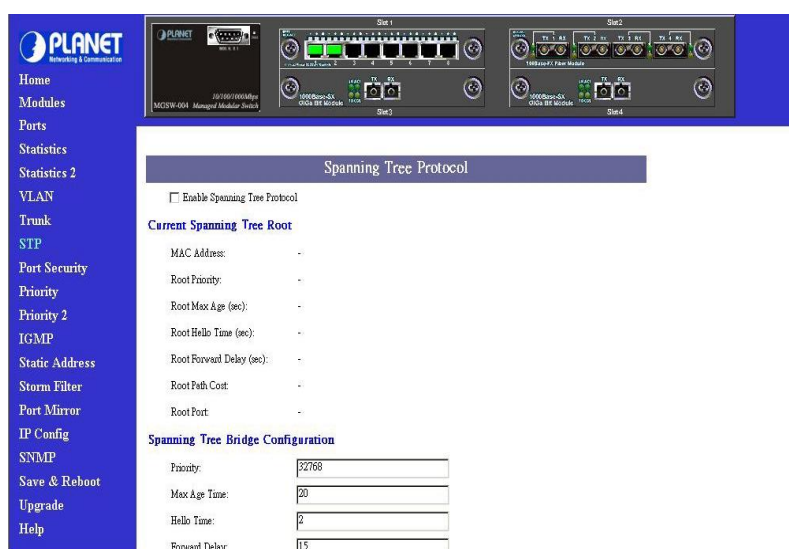
You can add, edit and remove port members of each trunk and then press **"Apply"** button after you have finished configuring the trunks you need.

*(Note: Make sure trunking ports are in the same VLAN group. )*

#### 4.8 STP

Spanning tree is a link management protocol that provides path redundancy while preventing undesirable loops in the network. For Layer 2 Ethernet network to function properly, only one active path must exist between two stations.

The spanning-tree algorithm calculates the best loop-free path throughout a switched network. STP forces redundant data paths into a standby (blocked) state. If a network segment in the spanning tree fails and a redundant path exists, the spanning-tree algorithm recalculates the spanning tree topology and activates the standby path.





If you want to participate in spanning tree, have the "**Enable Spanning Tree Protocol**" checkbox selected.

The Current Spanning Tree Root describes the unique root switch information for the instance of spanning tree.

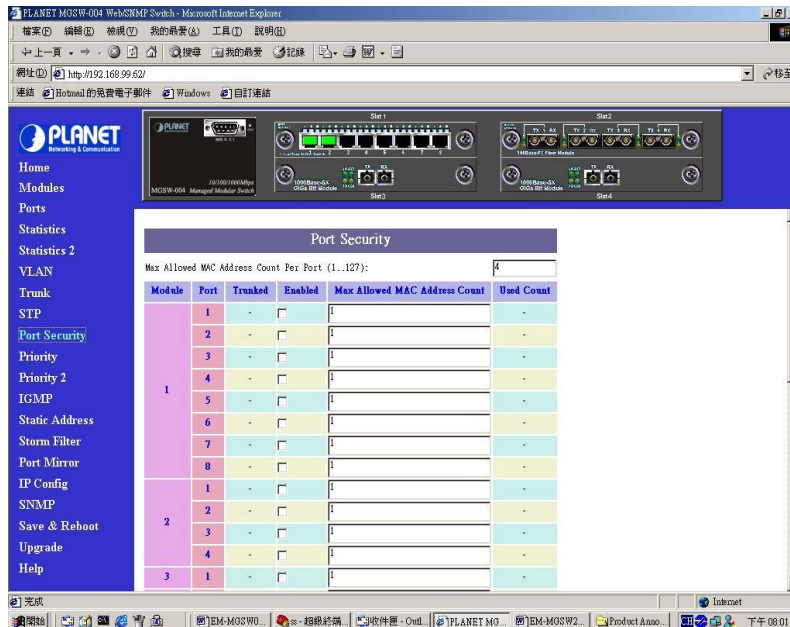
- Ø MAC Address: the MAC address of the root switch
- Ø Root Priority: The priority of the root switch
- Ø Root Max age (sec): the amount of time (in seconds) protocol information received on a port is stored by the root switch
- Ø Root Hello Time: how often the root switch broadcasts Hello message to other switches
- Ø Root Forward Delay: the amount of time a port will remain in the listening and learning states before entering the forwarding state
- Ø Root Path Cost: the path cost to the root switch from this switch
- Ø Root Port: the port providing the best path from the switch to the root switch

The Spanning Tree Bridge Configuration describes this switch information in the spanning tree

**Note:** Priority, Max Age Time, Hello Time and Forward Delay are unchangeable on this device.

## 4.9 Port Security

This function allows you to restrict specific MAC addresses to reside in some port. For example, a dummy hub is attached to some port for extension, and you just only allow 2 users to access this port at the same time, you can use the port security window to set the parameters.



To restrict the number of MAC address to reside in a port, you must do the following

- Ø Click the "**Enable**" checkbox for that port. IF the "Enable" checkbox is uncheck,

there is no MAC address count restriction for that port.

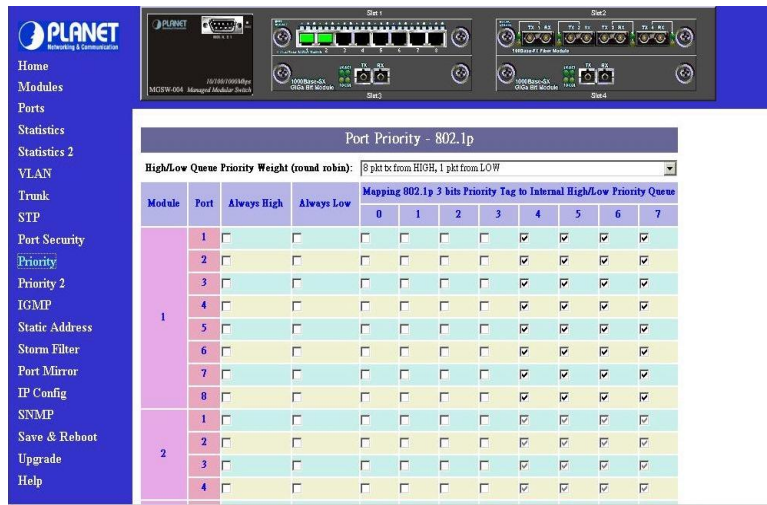
- Ø Type the number in the “ **Max Allowed MAC Address Count** “ edit for that port. The upper bound of this number is the “ **Max Allowed MAC Address Count per port** “
- Ø Press the “ **Press** “ button
- Ø The “ **Used Count** “ will tell you how many MAC address residing in the corresponding port now.

**Note:** A trunked port is not allowed to enable the port security option.

#### 4.10 Priority – 802.1p

There are two priority queues (high and low) on each port. Each port arbitrates between two transmit queues (high and low priority).

The arbitration uses weighted round-robin between the high and low priority queues, and you can adjust this weight.



#### Programmable Mapping of 802.1p to Internal Priority

The received packets with 802.1p tag are assigned priority according to a flexible and programmable mapping of the 802.1p user-priority tag (3 bits, value from 0 to 7) to the internal priority queue. The default is to assign a packet to high priority queue when the 802.1p user-priority tag is 4 to 7, and to low priority queue when the 802.1p user-priority tag is 0 to 3. Please check the corresponding mapping checkbox to assign a high priority or uncheck that to assign a low priority.

#### 4.11 Priority 2 – TOS (Type of Service)

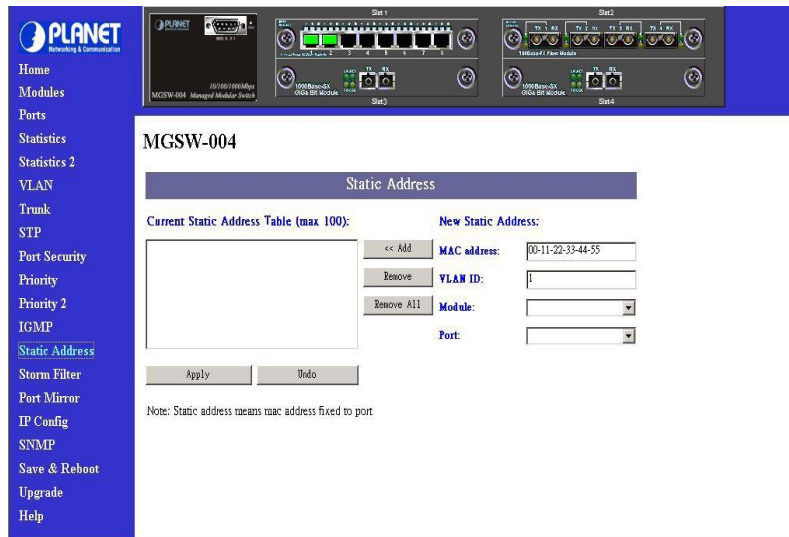
Each port can parse the header of an incoming IPv4 header and identify the Type-Of-Service byte (TOS field). This is extremely important with the deployment of Microsoft Windows 2000 and the emerging DiffServ standard, which marks Voice-Over-IP and other real-time traffic using this field. This feature provides Quality of Service (QoS).





### 4.13 Static Address

In this function, you can lock a certain MAC address (associated with a host) to a certain port. Once a certain MAC address is locked to a certain port, this MAC address will not receive any packets if it is moved to another port

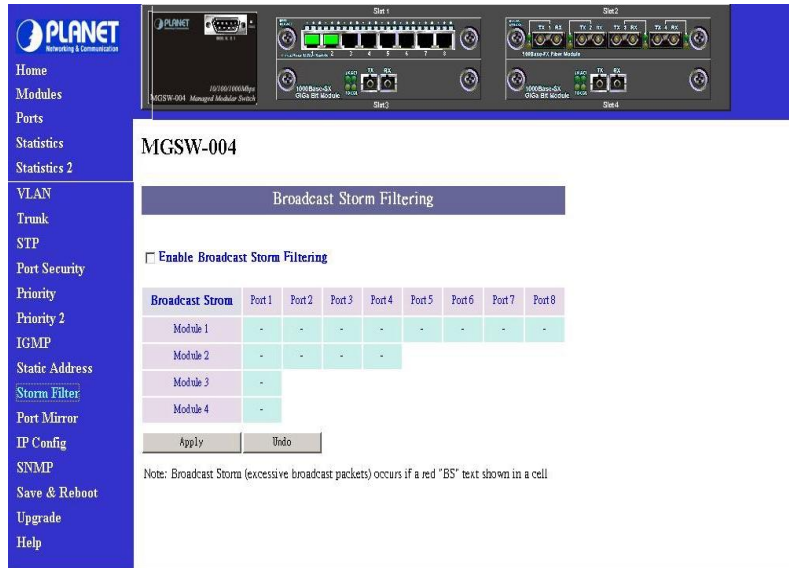


Static addresses are manually entered into the Static Address Table

- Ø Enter the MAC address in the MAC Address field (ex. 00-00-00-00-00-01) and VLAN ID (default is 1)
- Ø Select the Module and Port you want to associate with this entry with from the Port drop-down box.
- Ø Click “<<Add” button
- Ø Press “ Apply “ button.

### 4.14 Storm Filter

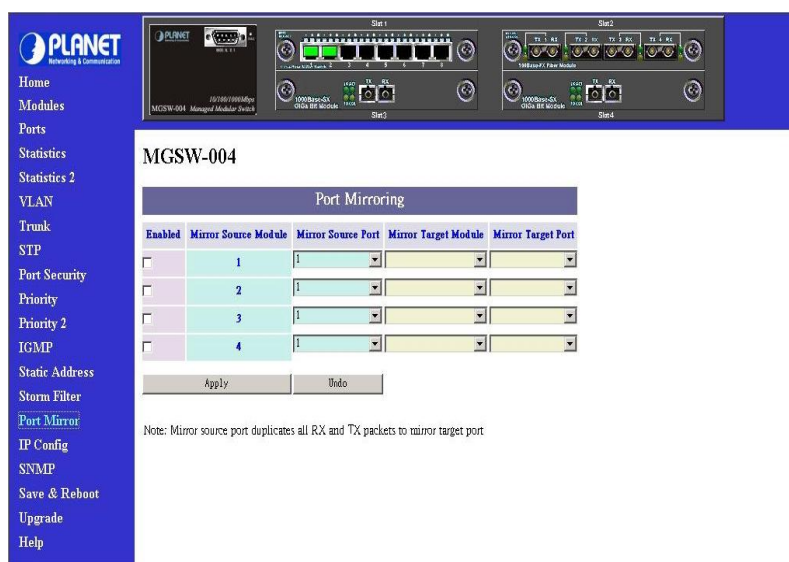
Storm Filter can avoid any flooded data packets. This feature prevents the bursts of broadcast traffic. Excessive broadcast packets (Broadcast Storms) can be filtered in our managed switch by enabling the "Broadcast Storm Filtering" option.



## 4.15 Port Mirror

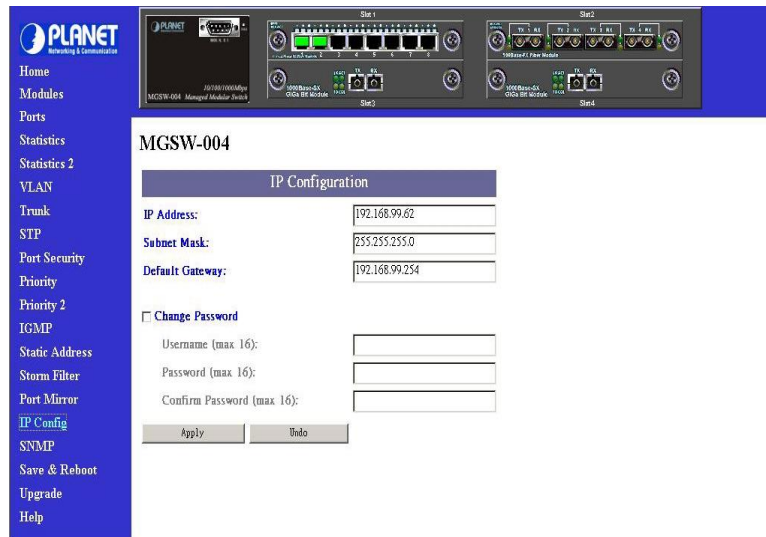
If you want to monitor all receive and transmit packets of one port. You can do the following:

- Ø Choose the monitored port in "Mirror Source Port" choice box in the corresponding mirror source module. Only one port can be monitored in one module at the same time
- Ø Choose the corresponding target module, port in "Mirror Target Module" and "Mirror Target Port" choice box.
- Ø Click the corresponding "Enabled" check box.
- Ø Press "Apply" button



## 4.16 IP Config

You can change the IP address, subnet mask and default gateway of the managed node. (You can also do that from RS232 console). Enter the IP address, subnet mask and default gateway in the corresponding edit box



If you want to change the user name or password for the managed node, the following steps is needed:

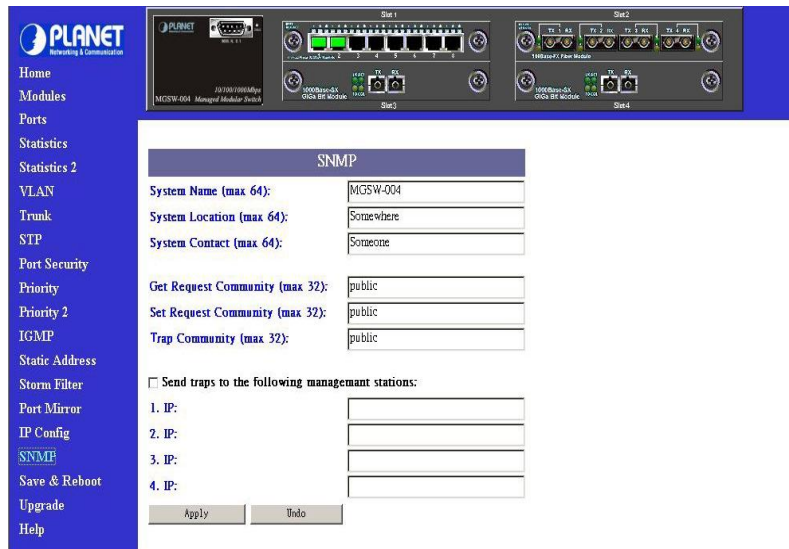
- Ø Click the "Change Password" checkbox
- Ø Enter the user name in "Username" edit box
- Ø Enter the same password in "Password" and "Confirm Password" edit box
- Ø Press the "Apply" button

You should reboot system to let your settings take effect if you have changed one of the IP address, subnet mask and default gateway

## 4.17 SNMP

You can manage the Switch using third-party's SNMP (Simple Network Management Protocol) agent. Access rights to the SNMP agent are controlled by community strings.

To set system name, system location and system contact, you can type the desired text string in the corresponding edit box.

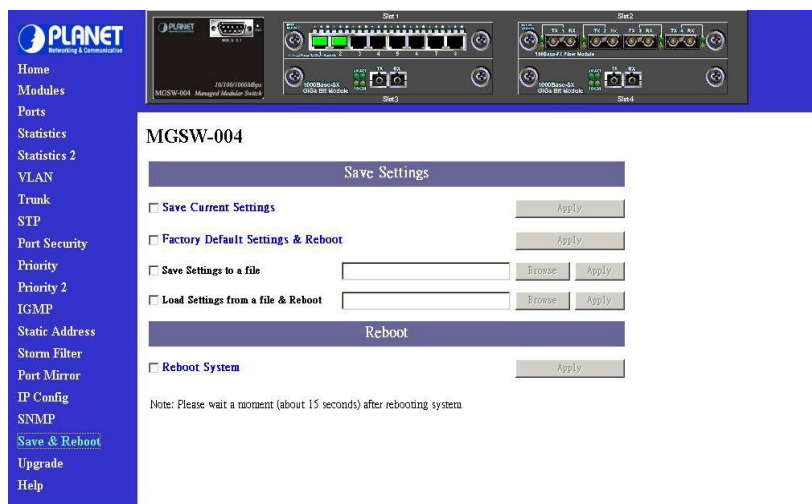


## 4.18 Save & Reboot

You can save current settings by click the "Current Settings" checkbox then press the "Apply" button next to the checkbox. You should reboot the system so that your current settings will take effect.

If you want to use the factory default settings, click the "Factory Default Settings" checkbox then press the "Apply" button next to the checkbox. You should reboot the system so that your current settings will take effect.

If you want to reboot system, click the "Reboot System" checkbox then press the "Apply" button next to the checkbox

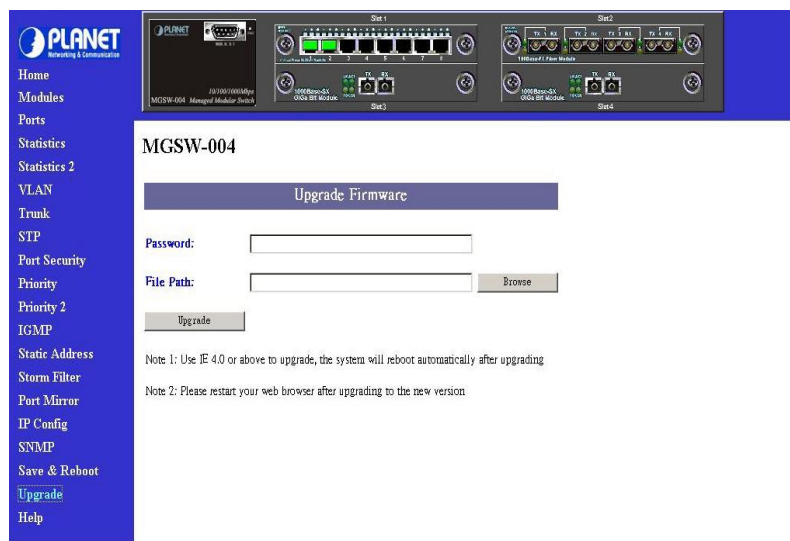


## 4.19 Upgrade

You can on-line upgrade the firmware of the managed unit. The following steps is needed to upgrade the firmware:

- Ø Use HTTP or FTP to download the new version firmware from our website.
- Ø Enter password in the "Password" edit box.
- Ø Enter the file downloaded in the "File Path" edit box. (You can use "Browse" button to select the file.)
- Ø Press the "Upgrade" button.

After you have successfully upgraded the new firmware, please reboot the system so that the new firmware will take effect



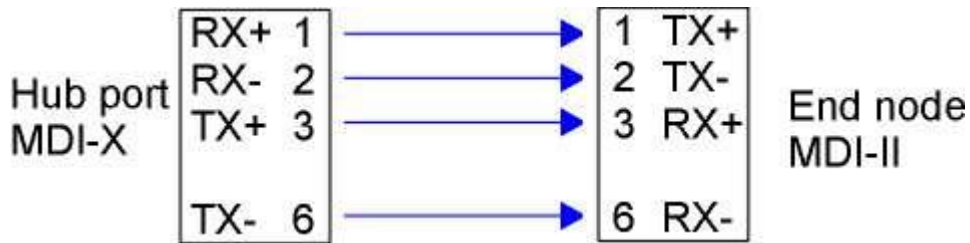
## Appendix A Technical Specifications

Model	MGSW-004			
Ports	4 module slot RS-232 DB-9 male			
Dimensions	440mm x 227mm x 67mm			
Weight	4.6kg			
Power Requirement	100-240 VAC 50-60Hz			
Switch architecture	Store-and-forward, Back-plane 9.6Gbs			
Flow Control	Back pressure for half duplex, IEEE 802.3x for full duplex			
Modules				
Model	MGSW-8TP	MGSW-4ST MGSE-4SC	MGSW-1SX MGSW-1LX	MGSW-1GT
Speed per port	10/100Mbps Auto-negotiation	100Mbps, Full-duplex support	1000Mbps, Full-duplex support	1000Mbps, Full-duplex support
Media type	RJ-45, STP/UTP	50/125,62.5/125 $\mu$ m, multi-mode ST/SC type	SX:50/125,62.5/125 $\mu$ m, Multi-mode fiber LX:50/125,62.5/125 $\mu$ m Multi-mode fiber 8,9/125 single-mode fiber	RJ-45 category 5e cable 4-pairs
Port	8-port RJ45	4-port Fiber-optic, ST/SC	1-port Fiber-optic, SC	1-port STP/RJ-45
MAC Address	4K	12K	4K	4K
EMI	FCC Class A, CE Mark			
Safety	UL, cUL, CE			
Temperature	0 $^{\circ}$ C to 55 $^{\circ}$ C			
Humidity	10%~95%			
Standards	IEEE802.3 10BASE-T IEEE802.3u 100BASE-TX/100BASE-FX IEEE802.3x Flow Control IEEE802.3ab Gigabit Ethernet IEEE802.1D Spanning Tree Protocol IEEE802.1p Class of service IEEE802.1Q VLAN Tagging ANSI/IEEE 802.3 N-Way Auto-negotiation IEEE802.3z Gigabit Ethernet			
Network management	IEEE802.1Q VLAN Port Trunking Spanning Tree Protocol IGMP and Sniffer ( Port Mirroring ) SNMP network management Port Priority - 802.1p & TOS ( Type of Service ) Static Address Table for manual address addition Broadcast Storm Filter function			

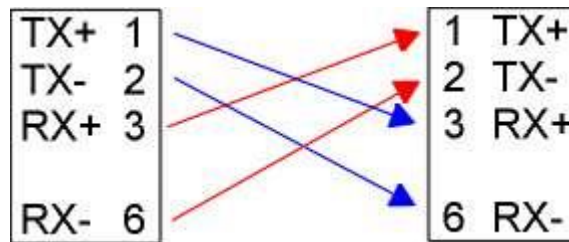
# Appendix B Cable Specification

## 10/100Mbps, 10/100Base-TX

Contact	MDI	MDI-X
1	1	3
2	2	6
3	3	1
6	6	2



Straight-Through Cable



Crossover Cable

## 1000Mbps, 1000Base T

Contact	MDI	MDI-X
1	BI_DA+	BI_DB+
2	BI_DA-	BI_DB-
3	BI_DB+	BI_DA+
4	BI_DC+	BI_DD+



5	BI_DC-	BI_DD-
6	BI_DB-	BI_DA-
7	BI_DD+	BI_DC+
8	BI_DD-	BI_DC-